

Achieve Temp Comfort in Every Room

WORKS WITH YOUR DUCTED SYSTEM



One-Hour Z600 Control Panel & Board

PRODUCT DETAILS

Adding the **One-Hour Z600 Control Panel & Board** to your HVAC system is one way to maximize energy efficiency, personal comfort and savings. The system gives homeowners control over how, when, and at what temperature a home is cooled/heated, including the ability to turn off cooling or heating to certain rooms. A system of motorized dampers is installed into existing ductwork, and is controlled by one thermostat for total convenience.

- Greater energy efficiency
- Customized personal comfort
- Less wear and tear on system

FEATURES

- 6 zones expandable to 12
- Auto changeover
- Priority cooling or majority wins
- Twenty minute time share option
- LED status indication
- On-board adjustable high & low limits & balance points
- Staging by zone thermostat or adjustable staging timer
- Purge cycle option
- 10-year warranty

This Product Controls

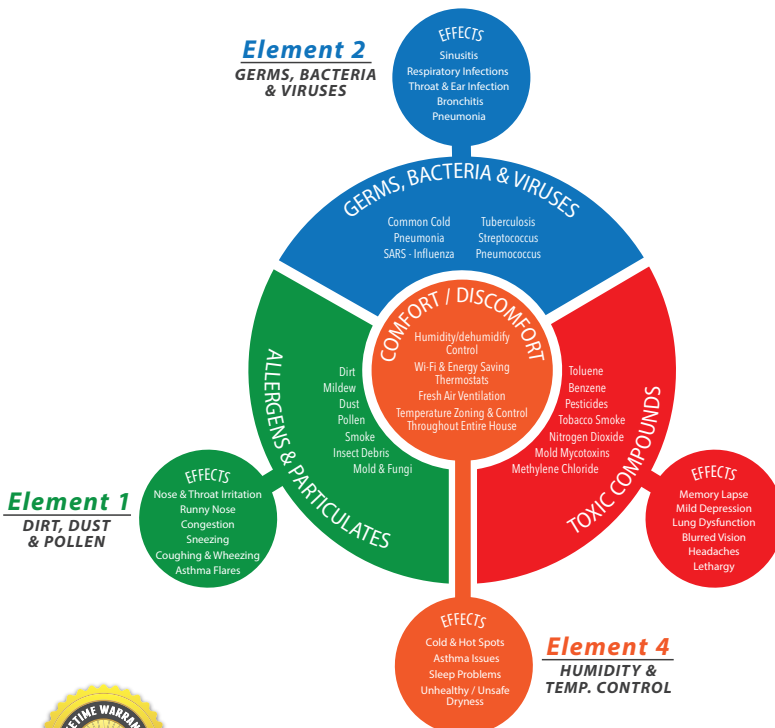


The EPA has ranked indoor air pollution among the top five environment dangers to the public.



ENERGY AWARE

Element 3 TOXIC GASES & ODORS



APPLICATION

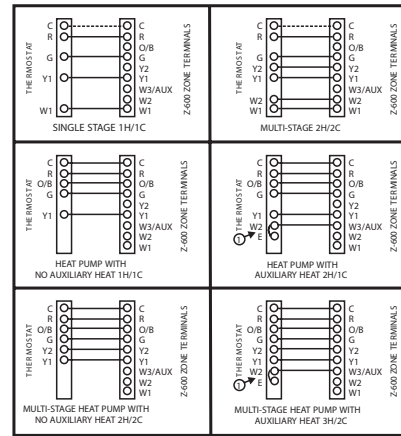
- Customize temperature in every room
- Achieve greater comfort in main living spaces
- Lower utility bills



PRODUCT SPECIFICATIONS

Construction	Aluminum back plate with mounting holes
Mounting	Snap track with 4 back plate screws
Dimensions	11.0" x 13.5" x 2.0" (WHD)
Operating Temperature	-40° to 150° F
Adjustable Limits	High Limit (100° to 175° F) Low Limit (40° to 58° F) High Balance Point (55° to 70° F) Low Balance Point (0° to 50° F)
Purge Cycle	OFF or 1 minute
Fan Mode	All zones or by thermostat

TYPICAL THERMOSTAT WIRING DIAGRAMS



Ⓞ IF HEAT PUMP THERMOSTAT HAS AN 'E' EMERGENCY HEAT TERMINAL, FIELD JUMPER THE 'E' TERMINAL TO THE AUXILIARY HEAT TERMINAL ON THE THERMOSTAT.

ZONE DAMPERS

1. May be two-wire (powered closed, spring open) or three-wire (powered closed, powered open)
2. Two-wire dampers connect to the zone damper terminals marked 'D' and 'D'. Three-wire dampers connect to the terminals marked PC (Powered Closed), C (Common), and PO (Powered Open).
3. As many as three dampers may be wired in parallel for any single zone, providing the total VA of all dampers does not exceed the VA rating of the zone control panel transformer.
4. A 40 VA transformer will power the panel and up to four (4) dampers. A 75 VA transformer will power the panel and up to seven (7) dampers.
5. If total VA of all dampers exceeds 75 VA, a relay and a separate 24 volt transformer will be required to power additional dampers.
6. Use only 18 gauge thermostat wire. Do not exceed 300 feet from zone damper to control panel.

ZONE THERMOSTATS

1. Zone thermostats must match equipment type. (Heat / Cool or Heat Pump) Power stealing thermostats are not recommended.
2. Use only 18 gauge thermostat wire. Do not exceed 300 feet from zone thermostat to control panel.

REMOTE SENSORS

Z-600-DAS

1. Mount the Z-600-DAS Discharge Air Sensor in the supply trunk. Mount the sensor out of the line of sight of the heat exchanger and cooling coils whenever possible and before any zone dampers. The Z-600-DAS sensor has a resistance value of 10,000 Ohms @ 77° F.
2. Use 18 gauge thermostat wire to connect the sensor to the DAS terminals on the zone control panel.

Z-600-OTS (For dual fuel applications)

1. Mount the Z-600-OTS Outdoor Temperature Sensor inside the outdoor unit where it will not be directly exposed to sunlight, water, snow or ice. The Z-600-OTS sensor has a resistance value of 10,000 Ohms @ 77° F.
2. Use 18 gauge thermostat wire to connect the sensor to the OTS terminals on the control panel.

HVAC UNIT

1. Wire the HVAC unit to the HVAC System terminals on the zone control panel. For equipment having separate heating and cooling transformers, cut the jumper marked RH-RC on the control board and wire independently.
2. Use 18 gauge thermostat wire to connect the zone control panel HVAC System terminals to the HVAC unit terminals.

SAFETY NOTES

- Wire the HVAC unit to the HVAC System terminals on the zone control panel. For equipment having separate heating and cooling transformers, cut the jumper marked RH-RC on the control board and wire independently.
- Use 18 gauge thermostat wire to connect the zone control panel HVAC System terminals to the HVAC unit terminals.