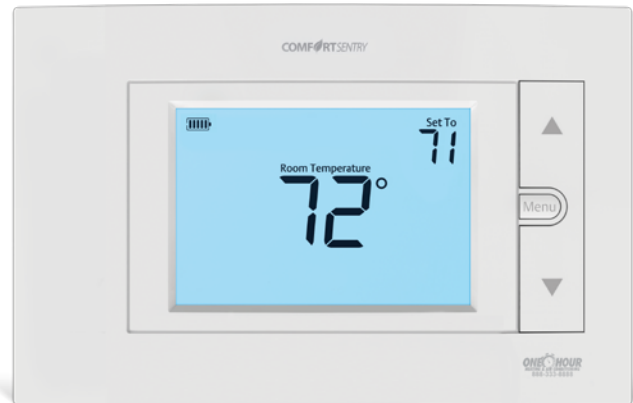


# Easy-To-Read, Easy-To-Use



**WORKS WITH MOST  
HVAC SYSTEMS!**

## Comfort Sentry™ 2/2 Non-Programmable



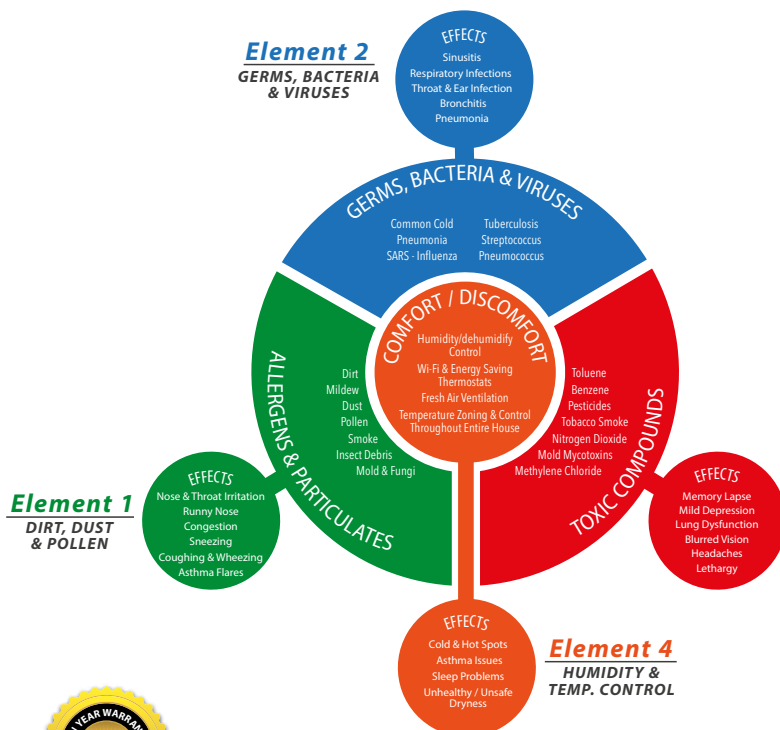
### PRODUCT DETAILS

The **Comfort Sentry™ 2/2 Non-Programmable** thermostat is an inexpensive upgrade for a simple-to-use, easy-to read, and efficient thermostat. Intuitive operating choices means that there is nothing new to learn, and the 5" backlit screen makes viewing and adjusting your thermostat easier than ever!

- Homeowner-friendly language & simple one-button, one-function operation
- Energy savings of up to 33%

### FEATURES

- Universal 2 heat/2 cool
- Dual fuel capable with Smart Fuel™ logic program
- Exclusive Cool Savings™ feature saves energy during peak A/C demand periods
- Keypad lockout and temperature limits



### This Product Controls

1 2 3 4

The EPA has ranked indoor air pollution among the top five environment dangers to the public.



**TEMPERATURE  
CONTROL**



**ENERGY  
AWARE**

### APPLICATION

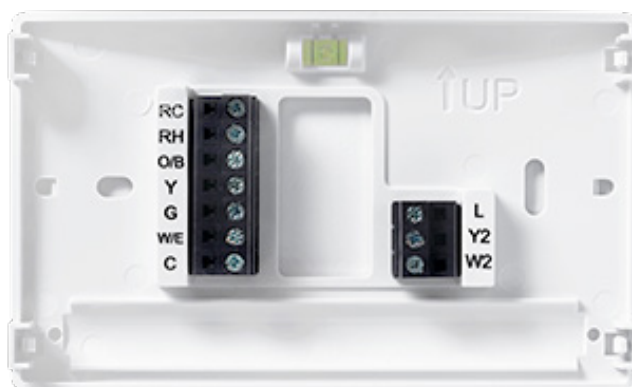
- Easy install and setup to upgrade any standard system without running new wires



### Thermostat Application Guide

Heat Pump (No Aux. or Emergency Heat)	Yes	Cool Only Systems	Yes
Heat Pump (with Aux. or Emergency Heat)	Yes	Gas or Oil Heat	Yes
Systems with up to 2 Stages Heat, 2 Stages Cool	Yes	Electric Furnace	Yes
Heat Only Systems (with optional fan switch)	Yes	Hydronic (Hot Water) Zone Heat - 2 Wires	Yes
Millivolt Heat Only Systems - Floor or Wall Furnaces	Yes	Hydronic (Hot Water) Zone Heat - 3 Wires	Yes

## THERMOSTAT QUICK REFERENCE



## INSTALLATION NOTES

1. Pull the thermostat body off the thermostat base. Forcing or prying on the thermostat will cause damage to the unit.
2. Place base over hole in wall and mark mounting hole locations on wall using base as a template.
3. Move base out of the way. Drill mounting holes. If you are using existing mounting holes and the holes drilled are too large and do not allow you to tighten base snugly, use plastic screw anchors to secure the base.
4. Fasten base snugly to wall using mounting holes and two mounting screws. Leveling is for appearance only and will not affect thermostat operation.
5. Connect wires to terminal block on base using appropriate wiring schematic.
6. Push excess wire into wall and plug hole with a fire resistant material (such as fiberglass insulation) to prevent drafts from affecting thermostat operation.
7. Install 2 "AA" alkaline batteries.
8. Carefully line the thermostat up with the base and snap into place.

## SAFETY NOTES

- Always turn off the power to the heating and cooling system before handling the thermostat wires.
- Make sure all wires are screwed in tightly and securely.

