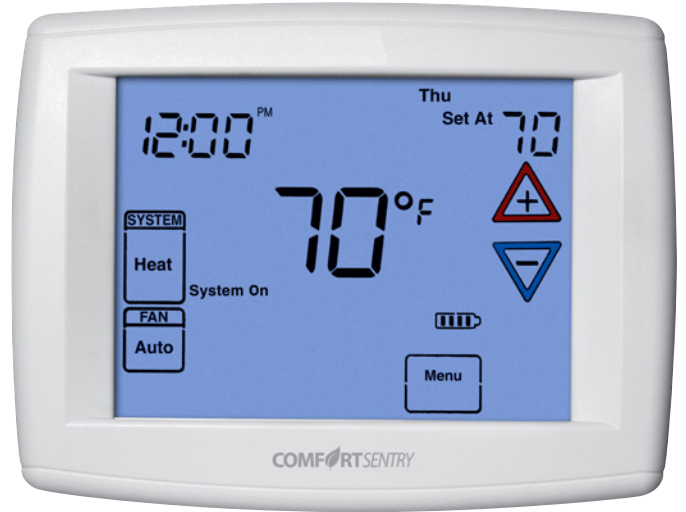


Easy-To-Read, Easy-To-Use



**WORKS WITH MOST
HVAC SYSTEMS!**

Comfort Sentry™ 2/1 Touchscreen Programmable



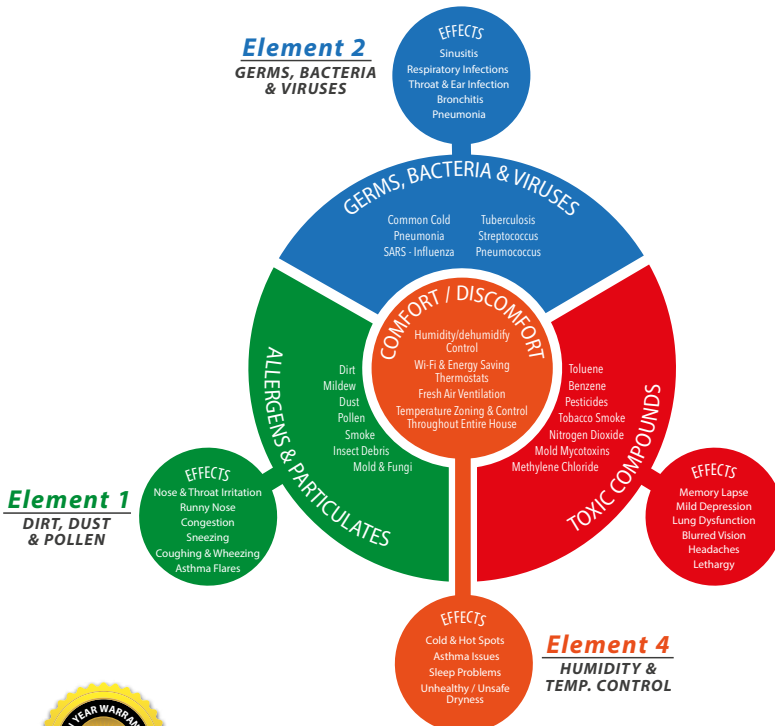
PRODUCT DETAILS

The Comfort Sentry™ 2/1 Touchscreen Programmable Thermostat is an inexpensive upgrade for a simple-to-use, easy-to-read, and efficient thermostat. Simple one-touch operations mean that there is nothing new to learn. Preinstalled or customizable programs makes heating and cooling your home more efficient than ever.

- Large, backlight touchscreen for easy viewing and control
- High accuracy gives you the greatest comfort and protects your HVAC system
- Save up to 33% in heating and cooling costs

FEATURES

- Universal 2 heat/1 cool
- Dual fuel capable with Smart Fuel™ logic program
- Exclusive Cool Savings™ feature saves energy during peak A/C demand periods
- Choice of 7 day, 5/1/1 day programmable, or non-programmable



This Product Controls



The EPA has ranked indoor air pollution among the top five environment dangers to the public.



TEMPERATURE CONTROL



ENERGY AWARE



PROGRAMMABLE

APPLICATION

- Easy install and setup to upgrade any standard system without running new wires

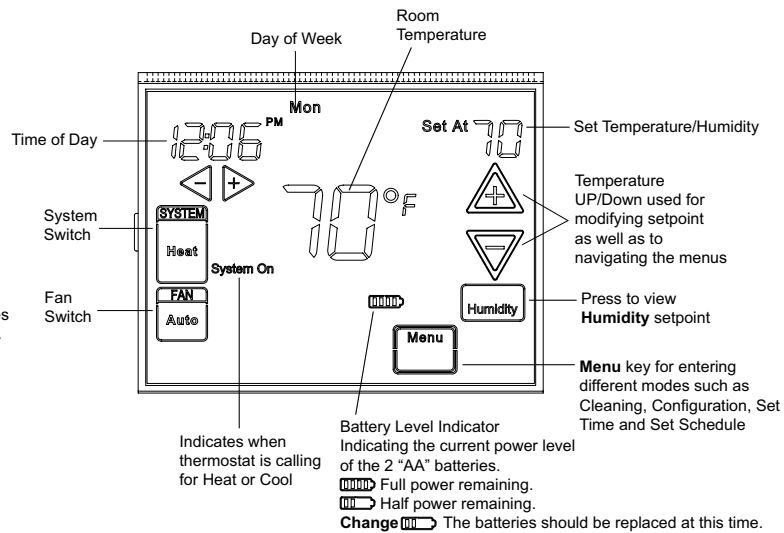


Thermostat Application Guide

Heat Pump (No Aux. or Emergency Heat)	Yes	Gas or Oil Heat	Yes
Heat Pump (with Aux. or Emergency Heat)	Yes	Electric Furnace	Yes
Systems with up to 3 Stages Heat, 2 Stages Cool	Yes	Hydronic (Hot Water) Zone Heat - 2 Wires	Yes
Heat Only Systems	Yes	Hydronic (Hot Water) Zone Heat - 3 Wires	Yes
Millivolt Heat Only Systems - Floor or Wall Furnaces	Yes	Wired Remote Temperature Sensor (Indoor/Outdoor)	Yes
Cool Only Systems	Yes	Dual Fuel Feature (Heat Pump Mode)	Yes
Thermostat Configuration Options	Yes		

HOME SCREEN DESCRIPTION

Note: If is displayed, the thermostat is battery powered. When battery power remaining is approximately half, will be displayed. If the home is going to be unoccupied for an extended period (over 3 months) and is displayed, the batteries should be replaced before leaving.



INSTALLATION NOTES

1. Pull the thermostat body off the thermostat base. Forcing or prying on the thermostat will cause damage to the unit.
2. Place base over hole in wall and mark mounting hole locations on wall using base as a template.
3. Move base out of the way. Drill mounting holes. If you are using existing mounting holes and the holes drilled are too large and do not allow you to tighten base snugly, use plastic screw anchors to secure the base.
4. Fasten base snugly to wall using mounting holes and two mounting screws. Leveling is for appearance only and will not affect thermostat operation.
5. Connect wires to terminal block on base using appropriate wiring schematic.
6. Push excess wire into wall and plug hole with a fire resistant material (such as fiberglass insulation) to prevent drafts from affecting thermostat operation.
7. Install 2 "AA" alkaline batteries.
8. Carefully line the thermostat up with the base and snap into place.

SAFETY NOTES

- Always turn off the power to the heating and cooling system before handling the thermostat wires.
- Make sure all wires are screwed in tightly and securely.

