

Easy-To-Read, Easy-To-Use



WORKS WITH MOST HVAC SYSTEMS!



Comfort Sentry™ 4/2 Easy Viewer

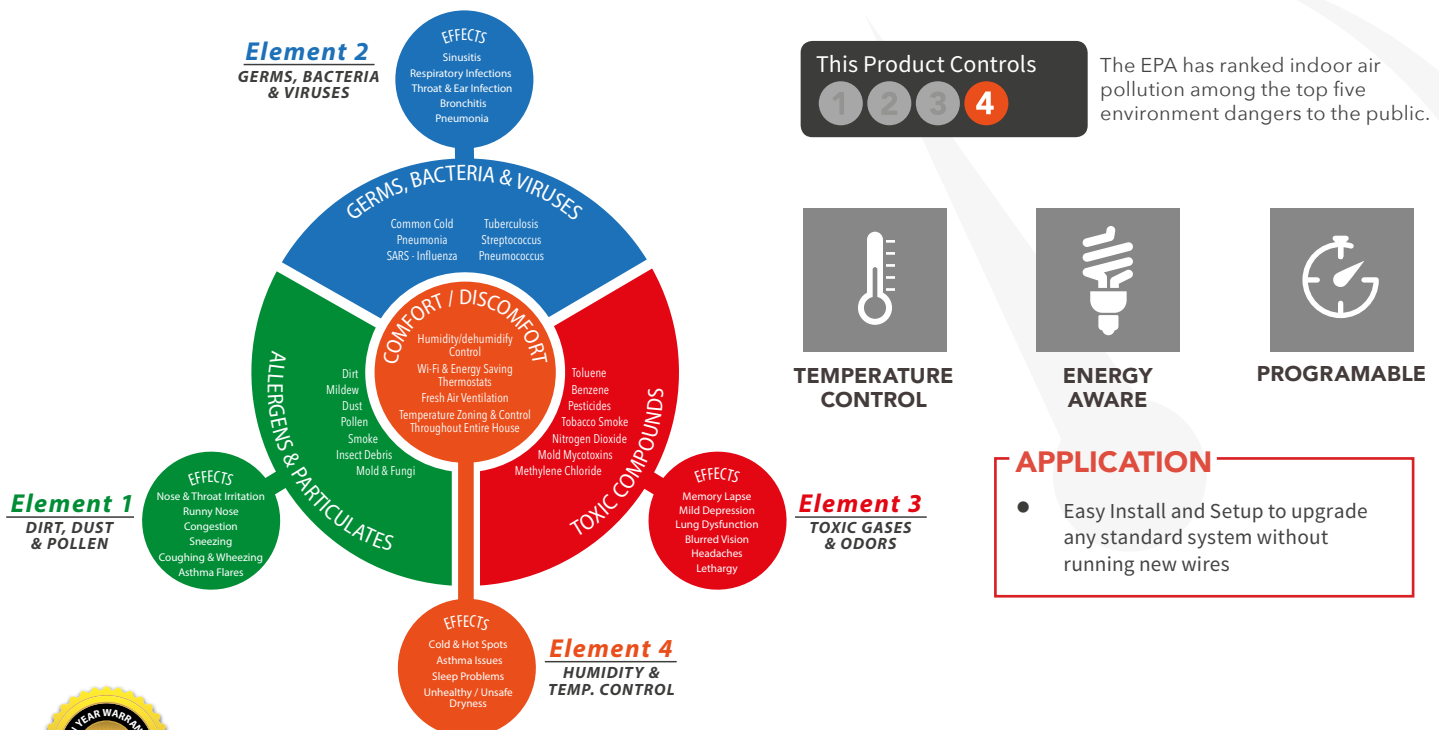
PRODUCT DETAILS

The Comfort Sentry™ 4/2 Easy Viewer thermostat is an inexpensive upgrade for a simple-to-use, easy-to read, and efficient thermostat. Intuitive operating choices mean nothing to learn, and the large letters make it easy to view without glasses.

- Display numbers and letters twice as large as most other thermostats
- Homeowner-friendly language & simple one-button, one-function operation
- Energy savings of up to 30%

FEATURES

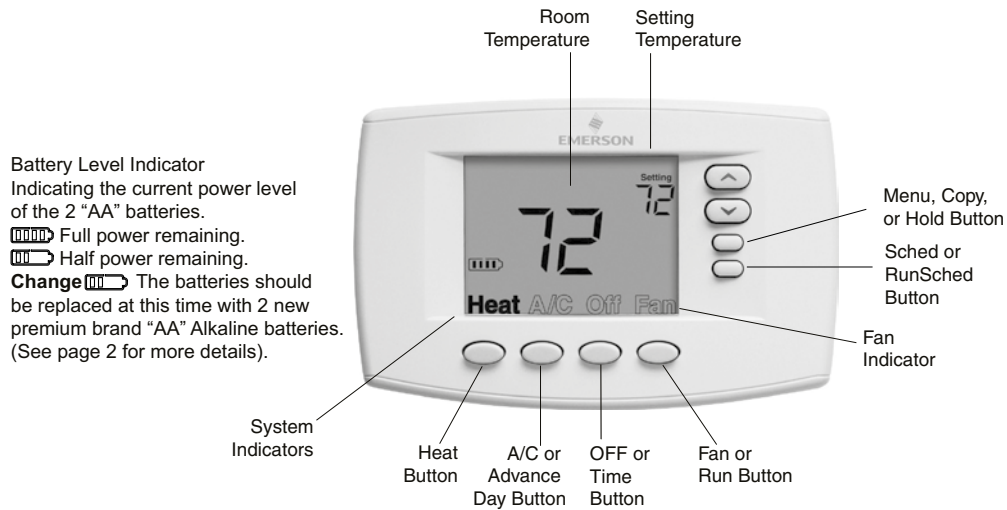
- Universal 4 heat/2 cool
- Blue, lighted display for easier low-light viewing
- Dual fuel capable with Smart Fuel™ logic program
- 7-Day Programming mode available
- Temperature Setpoint Limits



PRODUCT SPECIFICATIONS

Thermostat Configuration Options	Thermostat Applications	Maximum Stages Heat/Cool
Single Stage 1 No Heat Pump (SS1)	Gas, Oil, Electric, Heat Only, Cool Only or Heat/Cool Systems, 2 or 3 wire Hydronic Zone (Hot Water or Steam) Systems, 24 Volt or Millivolt	1/1
Multi Stage 2 No Heat Pump (MS2)		2/2
Heat Pump 1 Single Stage Compressor Heat Pump (HP1)	Single Stage Compressor Heat Pump Systems - up to 2 Stages Aux./Emergency Heat	3/1
Heat Pump 2 Two Stage or Two Compressor Heat Pump (HP2)	Two Stage or Two Compressor Heat Pump systems - up to 2 Stages Aux./Emergency Heat	4/2

THERMOSTAT QUICK REFERENCE



INSTALLATION NOTES

1. Pull the thermostat body off the thermostat base. Forcing or prying on the thermostat will cause damage to the unit.
2. Place base over hole in wall and mark mounting hole locations on wall using base as a template.
3. Move base out of the way. Drill mounting holes. If you are using existing mounting holes and the holes drilled are too large and do not allow you to tighten base snugly, use plastic screw anchors to secure the base.
4. Fasten base snugly to wall using mounting holes and two mounting screws. Leveling is for appearance only and will not affect thermostat operation.
5. Connect wires to terminal block on base using appropriate wiring schematic.
6. Push excess wire into wall and plug hole with a fire resistant material (such as fiberglass insulation) to prevent drafts from affecting thermostat operation.
7. Install 2 "AA" alkaline batteries.
8. Carefully line the thermostat up with the base and snap into place.

SAFETY NOTES

- Always turn of the power to the heating and cooling system before handling the thermostat wires.
- Make sure all wires are screwed in tightly and securely.

