

Hospital Grade Air At Home

PICTURED WITH AND WITHOUT OPTIONAL COLLAR MOUNT

PureSept[®] HEPA Air Cleaner



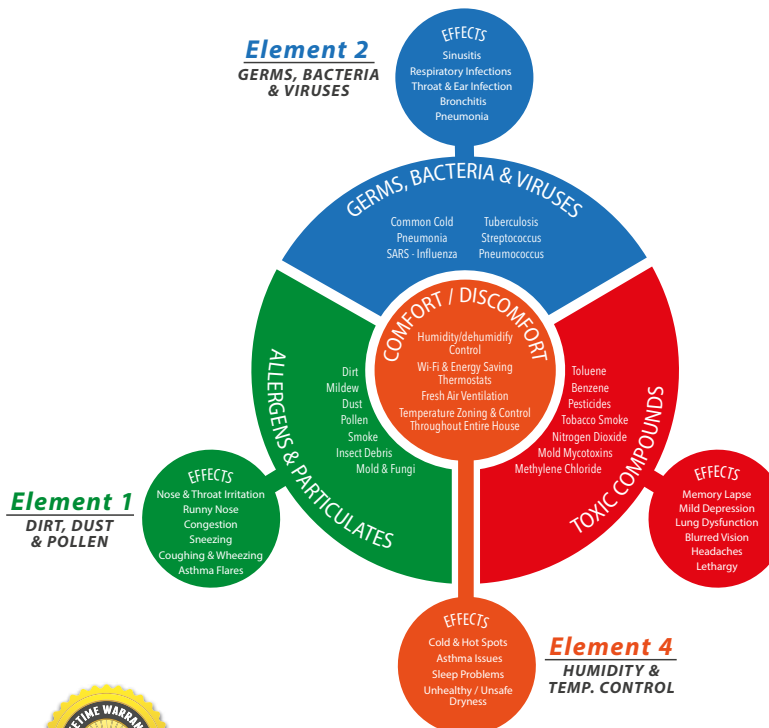
PRODUCT DETAILS

The PureSept[®] Bypass HEPA Air Cleaner is a true bypass High Efficiency Particulate Air (HEPA) filter just like those used in hospitals, clean rooms and microchip manufacturing plants. The PureSept HEPA filtration system uses a unique combination of three filters to purify and scrub the air in your home. It works with any home HVAC system and provides the optimum air purification solution for those who suffer from allergies or asthma, while controlling smoke, pollen, dust, and other particulates.

- The pre-filter captures large particles and prolongs the life of the HEPA filter
- The carbon filter captures and neutralizes tobacco smoke and cooking odors
- The HEPA filter uses certified HEPA media and removes 99.97% of airborne particles

FEATURES

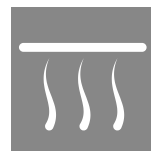
- Ducting flairs™ for easy install
- Insulated cabinet for quiet operation
- HEPA filter lasts up to two years with normal use
- Carbon and pre-filter only need replacing every 6 months
- Optional collar mounting kit available
- 7-Year limited warranty.



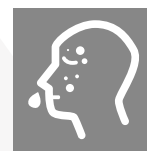
This Product Controls

- 1 2 3 4

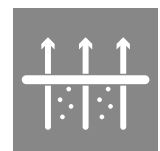
The EPA has ranked indoor air pollution among the top five environment dangers to the public.



ODOR CONTROL



ALLERGIES



AIR CLEANER

APPLICATION

- Great for homes with pets
- Relief for individuals with asthma
- Allergy relief
- Controls odors



PRODUCT SPECIFICATIONS

HP500 Size (L x W x H) 13" x 17" x 22"	HEPA filter type Micro-glass	Pre/carbon filter type Paper & media pad	Amperage 1.5 A
Performance 230/300 CFM	HEPA filter Life 2 years	Pre/carbon filter life 6 months	Power consumption 112 W Low 140 W High
HEPA filter size (L x W x H) 12"x 16" x 2.5"	Pre/carbon filter size (L x W x H) 12" x 16" x 2"	Voltage 120 VAC @ 60 Hz	Certification CCSAUS



INSTALLATION INSTRUCTIONS

1. Find a location that satisfies both service and maintenance requirements and cut holes using included template. Pre-drill for the securing screws.
2. Cut the insulation along the inside edge of both inlet and outlet ports to remove the insulation from the port openings. One cut permits the clean removal of the insulation piece. Cut the four metal tabs to release the mounting flairs for the inlet and outlet ports. Bend tabs outward approximately 90 degrees.
3. Align unit into place. Unfold the ducting flairs completely to sandwich the return air plenum between the ducting flair and the filtration unit. Install unit as usual using all supplied fastening hardware.
4. Remove protective plastic covers from all filters and replace them in their proper location

SAFETY NOTES

- Please consult local authorities to find out whether the installation of electrical products requires the services of a certified technician or electrician.
- It is recommended that the filtration unit have a devoted receptacle with 115V. It is not recommended to connect unit with an extension cord.
- Always unplug unit before servicing.

